

5 Saint Clements Mews, 16B Cherwell Street, Oxford, OX4 1BQ

One Bedroom Apartment ****PETS CONSIDERED****

Additional Room: Study room

Bathroom plus separate 2nd WC

Eco-Friendly Features: Green ecological sedum roof

Furnishing: High specification fixtures and fittings

Kitchen: Fully fitted Siemens appliances

Doors: Solid oak doors throughout

Heating: Under floor heating

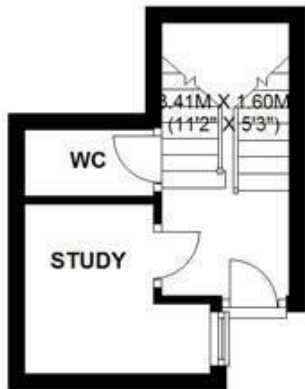
Council Tax: Band C

This one-bedroom apartment, complemented by a study room, offers a unique blend of ecological and modern living. The apartment features a green ecological sedum roof, promoting biodiversity and the natural colonisation of local plants. Inside, high specification fixtures and fittings are paired with fully fitted Siemens appliances for added reliability, style, and efficiency. Solid oak doors provide enhanced insulation and soundproofing, while under floor heating eliminates the need for bulky radiators, increasing useable floor space. The property also includes a natural slate patio area. Situated in council tax band C, this apartment is an ideal choice for those seeking an eco-friendly,

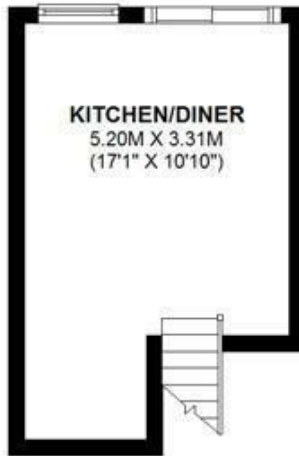
- 1 Bedroom & 1 Study Room
- 1 Reception Room and Open plan Kitchen
- 1 Bathroom and 1 separate WC
- St Clements- fantastic location
- Furnished Property
- No parking

£1,950 PCM

GROUND FLOOR
APPROX. 11.3 SQ. METRES (121.5 SQ. FEET)



FIRST FLOOR
APPROX. 14.9 SQ. METRES (160.4 SQ. FEET)



BASEMENT
APPROX. 14.4 SQ. METRES (155.0 SQ. FEET)



TOTAL AREA: APPROX. 40.6 SQ. METRES (436.9 SQ. FEET)

Energy Efficiency Rating		Current	Potential
Very energy efficient - lower running costs			
(92 plus) A			
(81-91) B			
(69-80) C			
(55-68) D			
(39-54) E		58	
(21-38) F			
(1-20) G			
Not energy efficient - higher running costs			
England & Wales		EU Directive 2002/91/EC	

Environmental Impact (CO ₂) Rating		Current	Potential
Very environmentally friendly - lower CO ₂ emissions			
(92 plus) A			
(81-91) B			
(69-80) C			
(55-68) D			
(39-54) E		58	
(21-38) F			
(1-20) G			
Not environmentally friendly - higher CO ₂ emissions			
England & Wales		EU Directive 2002/91/EC	